



Hard Chess Puzzle # 0102

By

G Bud Games
<https://gbud.in>

January 12, 2022

Contents

Hard Chess puzzle # 0102 - Mate in 3 moves	3
Hard chess puzzle 0102	3
Solution to hard chess puzzle 0102	4
Solution 1	4
Right moves for the solution to the hard chess puzzle 0102	8
Explanation for the moves	8
Categories of hard chess puzzle 0102	8
hard chess puzzle 0102 chart	9
How to view the solution to hard chess puzzle 0102	11
How to get help for moves in the hard chess puzzle 0102	12
Play chess for free	13

List of Figures

1	Solve this hard chess puzzle 0102. Mate in 3 moves @ https://gbud.in/gv4zdx3	3
2	Solve this hard chess puzzle online with solution @ https://gbud.in/gv4zdx3	3
3	Initial board position of hard chess puzzle 0102	4
4	Bxg3	5
5	Qxg3	5
6	h3	6
7	Rxh3+	6
8	gxh3	7
9	Qxh3#	7
10	hard chess puzzle 102 chart 1	9
11	hard chess puzzle 102 chart 2	10
12	hard chess puzzle 102 chart 3	10
13	hard chess puzzle 102 chart 4	11
14	Click the solution button to view solutions @ https://gbud.in/gv4zdx3	11
15	Click the help button to get help on next move @ https://gbud.in/gv4zdx3	12
16	Solve more hard puzzles @ https://gbud.in/chshdpz	12
17	Solve other puzzles @ https://gbud.in/chsgppz	12
18	Play chess online for free. Solve puzzles and play with friends	13
19	Solve this puzzle online by scanning this QR code or go to the link below	14

Hard Chess puzzle # 0102 - Mate in 3 moves

Solve this hard chess puzzle and improve your chess games through improvement of your chess strategies and chess tactics. This hard puzzle is a subset of [kids games](#).

Puzzle No : 0102

Difficulty level : hard

Description : Mate in 3 moves

Next Move : Black

Player level : Advanced

Short URL for puzzle : <https://gbud.in/gv4zdx3>

Hard chess puzzle 0102

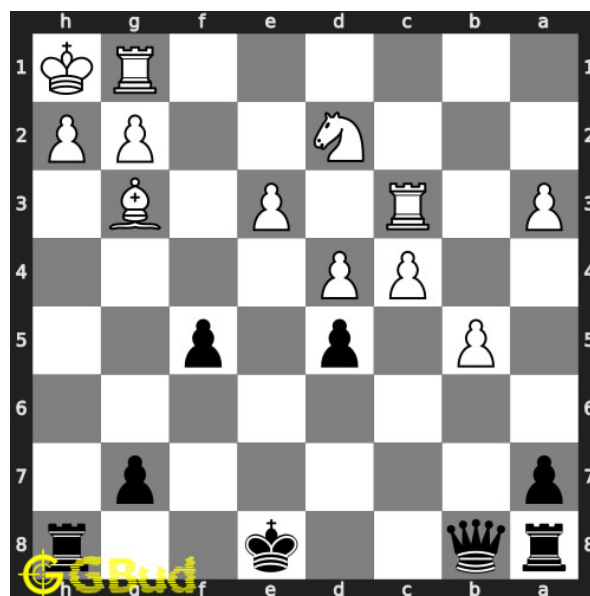


Figure 1: Solve this hard chess puzzle 0102. Mate in 3 moves @ <https://gbud.in/gv4zdx3>



Figure 2: Solve this hard chess puzzle online with solution @ <https://gbud.in/gv4zdx3>

Dont forget to check out [chess puzzles](#), [easy chess puzzles](#), [medium chess puzzles](#), [hard chess puzzles](#) and [chess puzzles collections](#) .

Solution to hard chess puzzle 0102

At this puzzle, next [move](#) is by [Black](#). The objective of the puzzle is to mate in 3 moves.

See the interactive solution at the [puzzle page](#)

Solution 1

Initial board position This is the initial board position of hard chess puzzle 0102.

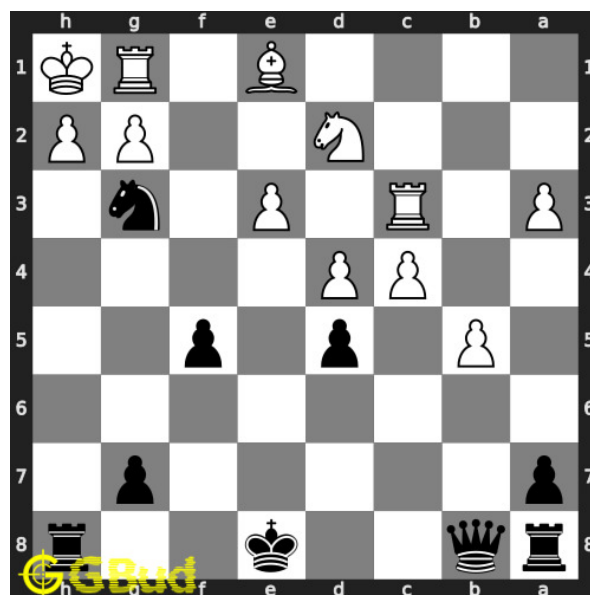


Figure 3: Initial board position of hard chess puzzle 0102

Move 1 Move by white

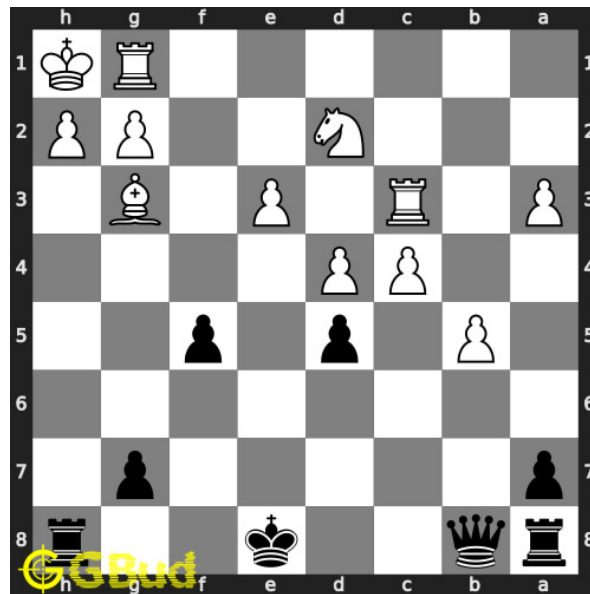


Figure 4: Bxg3

opponent's **bishop captures** your **knight** that was giving **check** since this is the only legal **move** available.

Move 2 Move by black

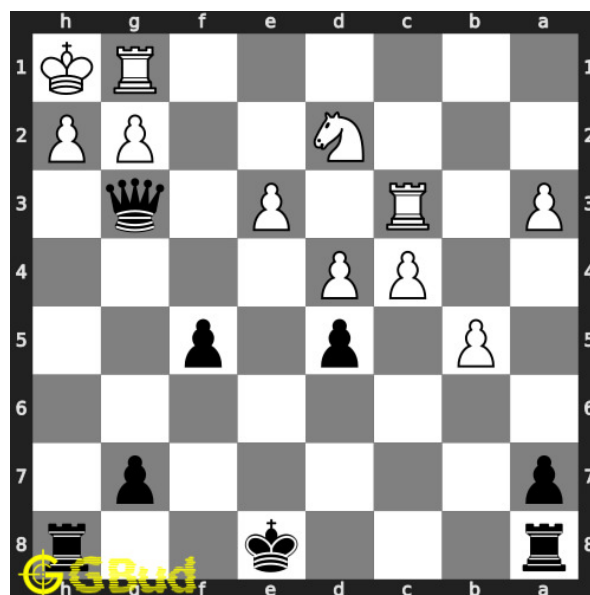


Figure 5: Qxg3

your **queen captures** opponents **bishop** and getting ready for a **checkmate** in next **move**.

Move 3 Move by white

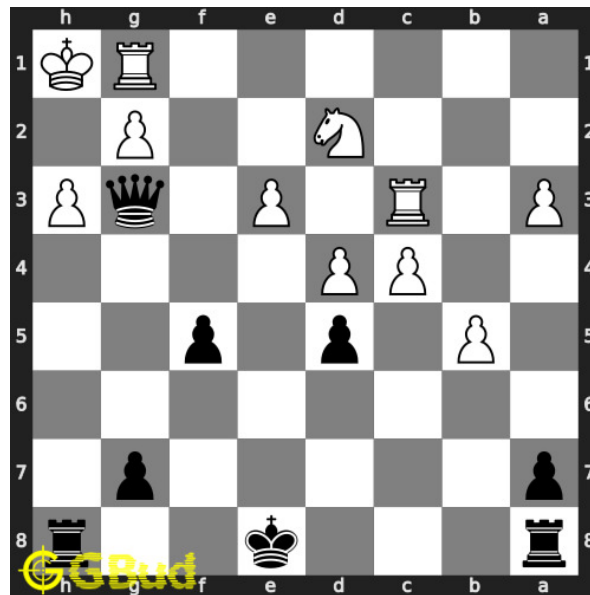


Figure 6: h3

opponent **moves** their **pawn** to defer the **checkmate**. if they do not **move** the **pawn**, your **queen** can **capture** the **pawn** and have a **checkmate**.

Move 4 Move by black

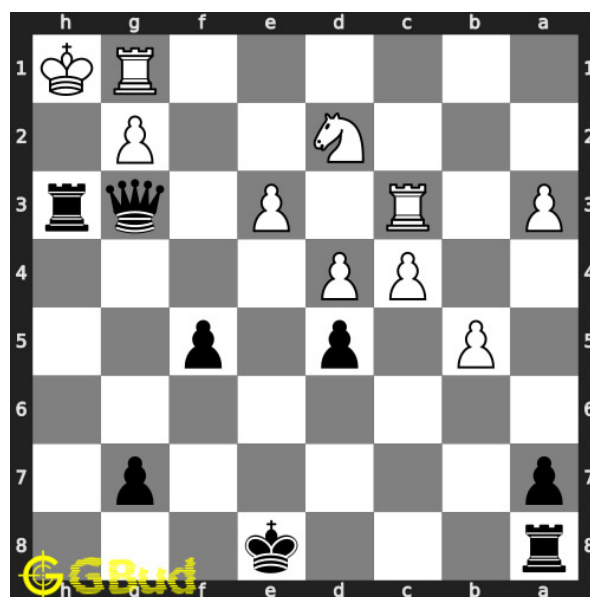


Figure 7: Rxh3+

your **rook sacrifices** itself for a **checkmate** in next **move**

Move 5 Move by white

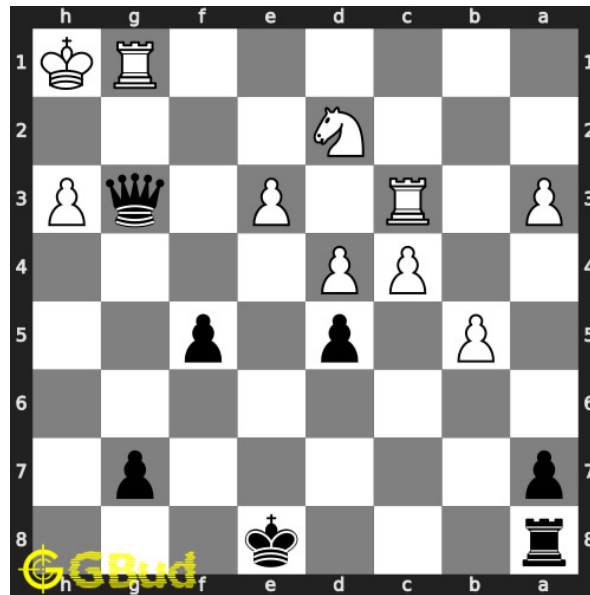


Figure 8: gxh3

opponent's [pawn captures](#) your [rook](#) as this is the only legal [move](#) available.

Move 6 Move by black

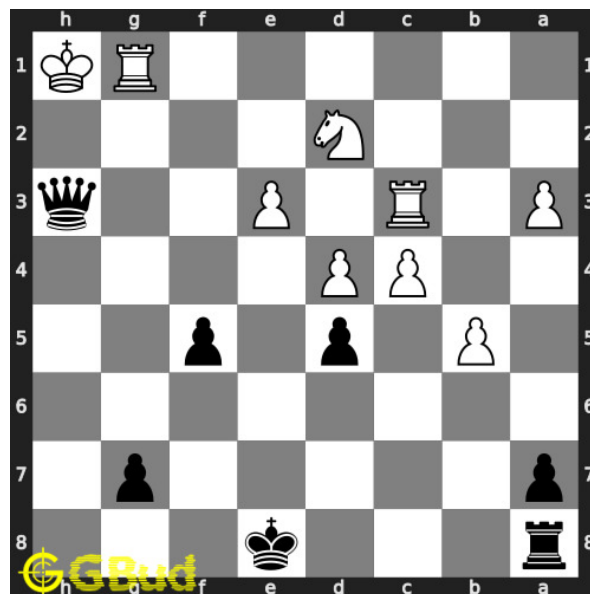


Figure 9: Qxh3#

your [queen captures](#) opponent's [pawn](#) and [checkmate](#). opponent's [king](#) can't [move](#) as it is blocked by friendly [rook](#).. this is how you can [mate](#) in 3 [moves](#).

Right moves for the solution to the hard chess puzzle 0102

Based on the objective of the puzzle, you have to make the right moves. Following are the right moves

1. Qxg3, Rxh3+, Qxh3#

Explanation for the moves

1. Bxg3 - Opponent's bishop captures your knight that was giving check since this is the only legal move available.
2. Qxg3 - Your queen captures opponents bishop and getting ready for a checkmate in next move.
3. h3 - Opponent moves their pawn to defer the checkmate. If they do not move the pawn, your queen can capture the pawn and have a checkmate.
4. Rxh3+ - Your rook sacrifices itself for a checkmate in next move
5. gxh3 - Opponent's pawn captures your rook as this is the only legal move available.
6. Qxh3# - Your queen captures opponent's pawn and checkmate. Opponent's king can't move as it is blocked by friendly rook.. This is how you can mate in 3 moves.
7. For right move - You have won the game after fantastic moves. It was wonderful
8. For wrong move - You could have own after the sacrifice of rook. Try again

Categories of hard chess puzzle 0102

This hard chess puzzle falls in these categories.

1. [Hard chess puzzles](#)
2. [Sacrifice puzzles in chess](#)
3. [Mate in 3 puzzles in chess](#)
4. [Endgame puzzles in chess](#)
5. [Strategy puzzles in chess](#)
6. [Rook puzzles in chess](#)
7. [Queen puzzles in chess](#)
8. [Bishop puzzles in chess](#)

hard chess puzzle 0102 chart



Figure 10: hard chess puzzle 102 chart 1



Figure 11: hard chess puzzle 102 chart 2



Figure 12: hard chess puzzle 102 chart 3



Figure 13: hard chess puzzle 102 chart 4

How to view the solution to hard chess puzzle 0102

To view the [solution to this puzzle](https://gbud.in/blog/game/chess/hard-chess-puzzles/hard-chess-puzzle-0102.html), follow the steps given below

1. Go to the [puzzle page](https://gbud.in/blog/game/chess/hard-chess-puzzles/hard-chess-puzzle-0102.html)
2. Click the solution button (Key as shown [below](#)) to view the solution



Figure 14: Click the solution button to view solutions @ <https://gbud.in/gv4zdx3>

How to get help for moves in the hard chess puzzle 0102

To get help or the possible next moves in the puzzle, , follow the steps given below

1. Go to the [puzzle page](#)
2. Click the help button (exclamation mark as shown [below](#)) to get help or suggestion on next possible [move](#)



Figure 15: Click the help button to get help on next move @ <https://gbud.in/gv4zdx3>



Figure 16: Solve more hard puzzles @ <https://gbud.in/chshdpz>



Figure 17: Solve other puzzles @ <https://gbud.in/chsgppz>

Play chess for free

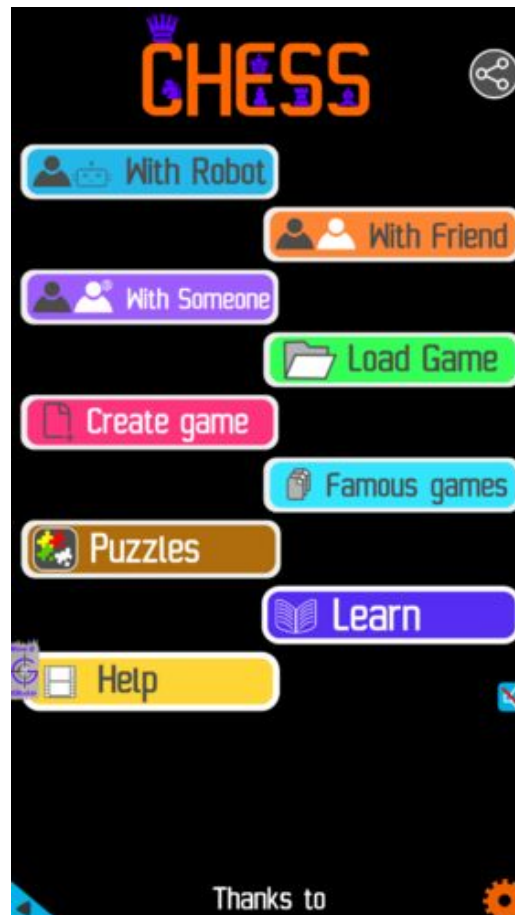


Figure 18: Play chess online for free. Solve puzzles and play with friends

Play chess for free at <https://gbud.in/chs>

We present you a platform to play chess online with friends for free. No need to install any app. You can play chess for free without registration or login.

Simple. You can do several chess related activities.

1. [solve chess puzzles](#)
2. [learn about chess](#)
3. [play chess with computer](#)
4. [play chess with friend](#)
5. [create your own chess games](#)

6. [fen viewer](#)
7. [fen editor](#)
8. [fen generator](#)
9. [pgn viewer](#)
10. [chess board editor](#)
11. [view famous chess games.](#)



Figure 19: Solve this puzzle online by scanning this QR code or go to the link below

<https://gbud.in/gv4zdx3>

Read the latest article on Hard Chess puzzle # 0102 - Mate in 3 moves by scanning this QR code or click the link

Previous article : « [Hard Chess puzzle # 0101 - Remove opponent's rook](#)

Next article : [Hard Chess puzzle # 0103 - Gain opponent's queen in 2 moves »](#)

[Back to top](#)

[Contact Us](#)